

ANTI-MÜLLERIAN HORMONE MONOCLONAL ANTIBODY

| | |
|------------------|--|
| Abbreviation | AMH |
| Accession Number | P03971 |
| Specificity | Detects human Anti-Müllerian hormone (AMH) |
| Host Species | Mouse |

STAR PAIRS

We recommend BM459-P2B4 as the capture antibody in sandwich ELISA with BM459-S4E8 as the detection antibody.

| | |
|---------------|---|
| Application | Sandwich ELISA and recommended for use in Lateral Flow (LF) and Chemiluminescent Immunoassay (CLIA). |
| Target Marker | Anti-Müllerian hormone (AMH) is a glycoprotein hormone with roles in differentiation and folliculogenesis. AMH can serve as a biomarker for ovarian reserve and this can be used to predict timing of the menopause as well as ovarian response to in vitro fertilisation treatment ¹ . AMH can also be used as a marker for ovarian dysfunction, particularly polycystic ovary syndrome; this is an endocrine disorder characterised by AMH levels two or three times higher than normal. |
| References | ¹ Kelsey TW, Wright P, Nelson SM, Anderson RA, Wallace WH (2011). "A Validated Model of Serum Anti-Müllerian Hormone from Conception to Menopause". PLOS ONE. 6 (7): e22024. PMC 3137624 . PMID 21789206. doi:10.1371/journal.pone.0022024. |

WHY CHOOSE BBI's AMH ANTIBODIES?

- + **Save time and money** by choosing our recommended matched pair.
- + Be confident in your **results** when you choose BBI's antibodies for your next assay –
 - + Our AMH antibodies have been **tested in sandwich ELISA** on patient samples
 - + Results correlate with those gained using a **commercial assay** – discover results on page two
- + **Linear increase in signal** is seen with increasing concentration of AMH

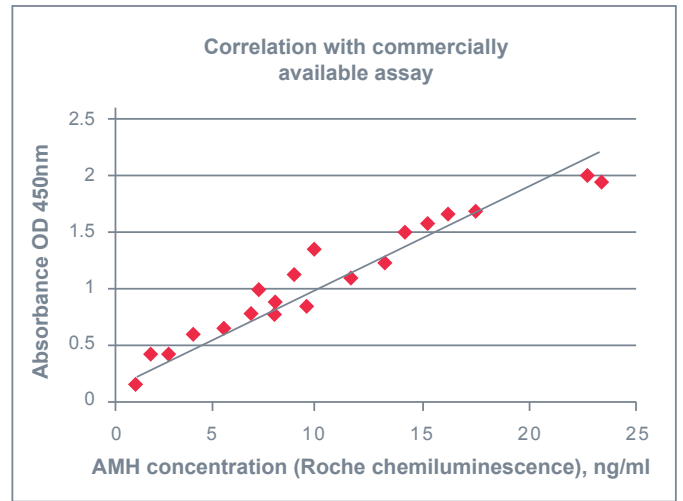
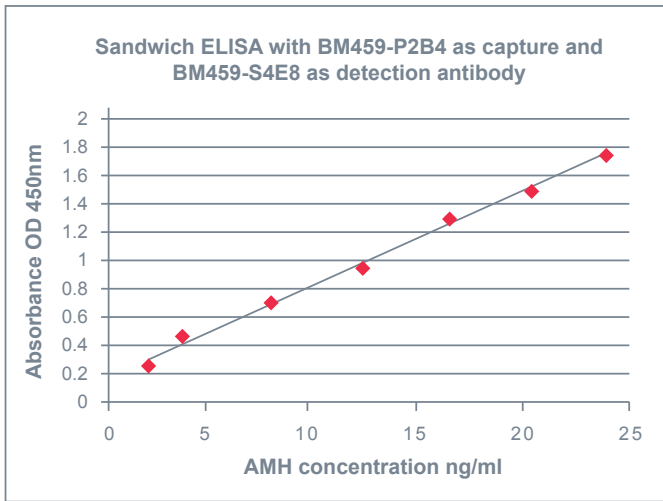
Order your evaluation sample today www.bbisolutions.com

Characterisation

Sandwich ELISA

A panel of serum samples with known AMH concentration were tested in sandwich ELISA using BM459-P2B4 as the capture antibody and BM459-S4E8 as the detection antibody. A linear increase in signal with increasing AMH concentration was seen.

An example of a sandwich ELISA on patient samples showing correlation between results gained using BBI antibodies BM459-P2B4 (capture) / BM459-S4E8 (detection) and Roche chemiluminescence reagents.



Pack sizes

1mg, bulk amounts available on request.

ORDERING DETAILS - USE THE FOLLOWING CODES WHEN ORDERING

| Product | Code | Description |
|--|------------|--|
| Anti-Müllerian Hormone Monoclonal Antibody (AMH) | BM459-P2B4 | Capture antibody in Sandwich ELISA with BM459-S4E8 as the detection antibody |
| Anti-Müllerian Hormone Monoclonal Antibody (AMH) | BM459-S4E8 | Detection antibody in Sandwich ELISA with BM459-P2B4 as the capture antibody |

Order a sample today sales@bbisolutions.com
 Int: +44 (0) 2920 767 499 USA: 1-800-423-8199 China: +852 355 22996