

CERTIFICATE OF ANALYSIS

MONOCLONAL ANTIBODIES

AMH mouse monoclonal antibody

Code No.	BM459-P2B4
Grade	Affinity Purified
Lot No.	

RECEIVER INFORMATION

Expiry Date

Storage Temperature 2-8°C (up to 1 month). Aliquot and store below -15°C (long term)

Storage Notes

Avoid repeat freeze thaw cycles

Shipping Temperature

2-8°C

PRODUCT INFORMATION

Specificity Antibody detects human Anti-Müllerian hormone (AMH).

Immunogen Recombinant AMH

Source Ascites

BBI Solutions Clone No. P2B4

Application Recommended for use in LF, CLIA and ELISA. Can be used as the Capture antibody in Sandwich ELISA with BBI Solutions BM459-S4E8 as the Detection antibody.

Isotype IgG2_a

Host Mouse

Purification Protein A

Presentation Supplied liquid in a 0.01M PBS buffer, pH7.4 containing 0.02% sodium azide.

HEALTH AND SAFETY

Application For in-vitro use and research or further processing only.

Precaution Potentially hazardous. For specific precautions, see Safety Data Sheet.

Material Safety For further information and technical details, please download a Safety Data Sheet at www.bbisolutions.com or contact your BBI Account Manager.

ANALYSIS

TESTS	SPECIFICATIONS	RESULTS
-------	----------------	---------

Determination Method

Protein concentration by Optical Density at 280nm.

≥0.5 mg/ml

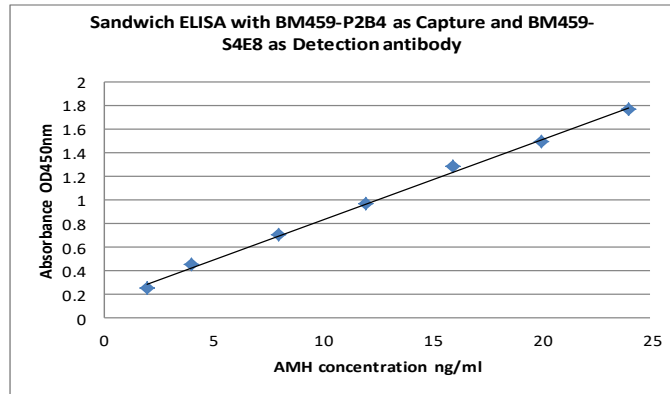
mg/ml

Purity

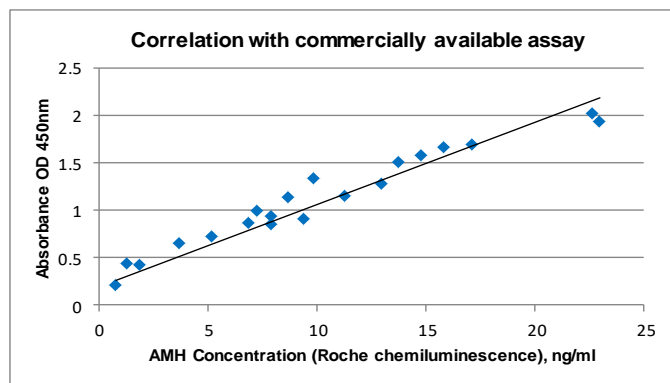
Defined by a major band ≥95% using SDS- PAGE.

Sandwich ELISA

An example of testing a previous Lot in sandwich ELISA using BM459-P2B4 as the Capture antibody and BM459-S4E8 as the Detection antibody.



An example of a sandwich ELISA using sera evaluated by Roche reagent with chemiluminescence using BM459-P2B4 as the Capture antibody and BM459-S4E8 as the Detection antibody.



Name:		Position:	
Signed:		Date:	