

CERTIFICATE OF ANALYSIS

MONOCLONAL ANTIBODIES

CA15-3 Monoclonal Mouse Antibody

Code no.	BM236-V2G9
Grade	Affinity Purified
Lot no.	

RECEIVER INFORMATION

Expiry Date	
Storage Temperature	2-8°C (up to 1 month). Aliquot and store below -15°C (long term)
Storage Notes	Avoid repeat freeze thaw cycles
Shipping Temperature	2-8°C

PRODUCT INFORMATION

Reacts with	Human CA15-3 antigen, including BBI Solutions code no. P301-4
Specificity	Minimal cross reactivity with human CA125
Immunogen	Human CA15-3 antigen from human cell line.
BBI Solutions clone no.	V2G9
Application	Sandwich ELISA, Western Blot. Can be used as a Capture antibody for CA15-3 ELISA with BM236-K6A5 as the Detection antibody.
Isotype	IgG _{2b} κ
Host	Mouse
Purification	Protein G
Presentation	Single homogenous batch, 0.2µM filtered, supplied liquid in Phosphate Buffer Saline, pH 7.4 with 0.09% sodium Azide

HEALTH AND SAFETY

Application	For in-vitro use and research or further processing only.
Precaution	Potentially hazardous. For specific precautions, see Safety Data Sheet.
Material Safety	For further information and technical details, please download a Safety Data Sheet at www.bbisolutions.com or contact your BBI Account Manager.

ANALYSIS

TESTS	SPECIFICATIONS	RESULTS
-------	----------------	---------

Determination method:

Protein Concentration by
Optical Density at 280nm
using
E_{1%,1cm} = 1.35

≥0.5 mg/ml

mg/ml

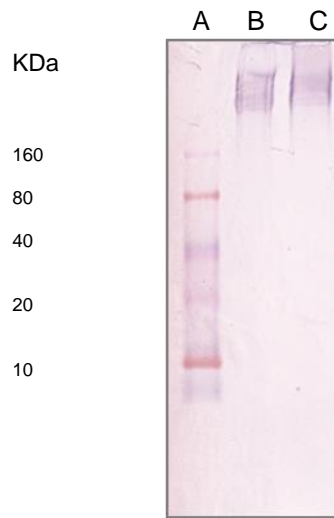
Western blot analysis

An example of the reactivity of a previous Lot of BM236-V2G9 with BBI Solutions P301-4 (lot 54-188)

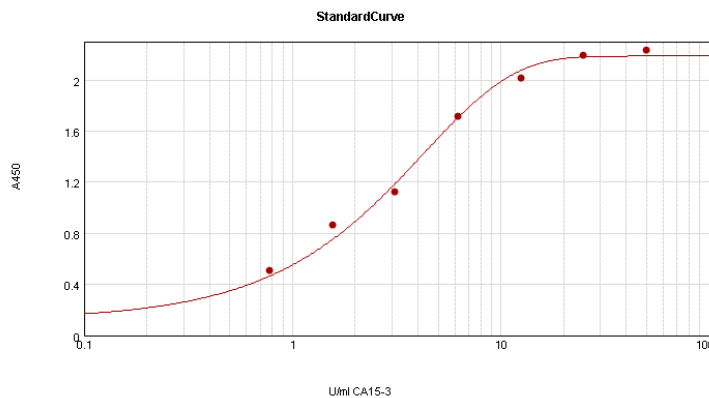
Fig 1. Western blot analysis of human CA15-3 antigen and reactivity with BM236-V2G9 (lot 39-201)

Antibody dilutions = 1:10,000

(A) Novex sharp STD LC5800
(B) Reduced CA15-3
(C) Non-Reduced CA15-3



Sandwich ELISA: BM236-V2G9 example lot 476-201 was used as a Capture antibody with BM236-K6A5 used as the Detection. BBI Solutions P301-4 was used as the standard.



Name:		Position:	
Signed:		Date:	