

# CERTIFICATE OF ANALYSIS

## MONOCLONAL ANTIBODIES

---

### Toxin B (C. difficile) Mouse Monoclonal Antibody

---

<b>Code no.</b>	<b>BM347-T4G1</b>
<b>Grade</b>	<b>Affinity Purified</b>
<b>Lot no.</b>	

---

#### RECEIVER INFORMATION

---

<b>Expiry Date</b>	
<b>Storage Temperature</b>	2-8°C (up to 1 month). Aliquot and store below -15°C (long term)
<b>Storage Notes</b>	Avoid repeat freeze thaw cycles
<b>Shipping Temperature</b>	2-8°C

---

#### PRODUCT INFORMATION

---

<b>Specificity</b>	Antibody specifically detects Toxin B of C.difficile.
<b>Immunogen</b>	Recombinant Toxin B.
<b>Source</b>	Ascites of balb/c mouse.
<b>BBI Solution's clone no.</b>	T4G1
<b>Application</b>	Lateral Flow, Sandwich ELISA and Western Blot. Recommended as the detection antibody in Lateral Flow assays.
<b>Isotype</b>	IgG
<b>Host</b>	Mouse
<b>Purification</b>	Protein G
<b>Presentation</b>	Single homogenous batch, supplied liquid in a PBS buffer, pH7.2 containing 0.1 % sodium azide.

---

#### HEALTH AND SAFETY

---

<b>Application</b>	For in-vitro use and research or further processing only.
<b>Precaution</b>	The product has been labelled T (toxic) under UK regulations: COSHH Sch 1(6) for sodium azide concentration $\geq 0.1\%$ .
<b>Material Safety</b>	For further information and technical details, please download a Safety Data Sheet at <a href="http://www.bbisolutions.com">www.bbisolutions.com</a> or contact your BBI Account Manager.

**ANALYSIS**

TESTS	SPECIFICATIONS	RESULTS
-------	----------------	---------

**Determination method:**

Protein Concentration by Optical Density at 280nm using  $E_{1\%,1\text{cm}} = 1.38$   $\geq 0.5$  mg/ml mg/ml

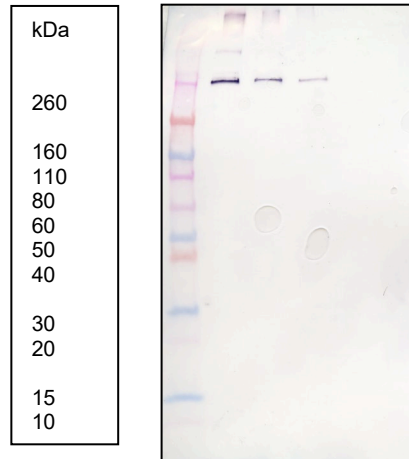
**Purity** Defined by a major band on coomassie stained SDS-PAGE.

**Western Blot** An example of a previous Lot of BM347-T4G1 tested by western blot against C difficile Toxin B (BBI Solutions code P806-1) at a dilution of 1:5000

Figure 1 Western Blot of monoclonal mouse anti Toxin B against C.difficile toxin B

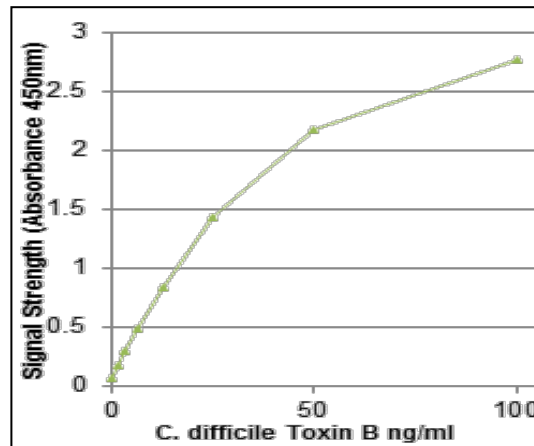
Antibody Dilution = 1:5000

Lane 1 Standard  
 Lane 2 C.difficile Toxin B @ 66µg/ml  
 Lane 3 C.difficile Toxin B @ 33µg/ml  
 Lane 4 C.difficile Toxin B @ 16.5µg/ml



**Sandwich ELISA**

Sandwich ELISA using BM347-N4A8 as the Capture antibody and a previous lot of BM347-T4G1 as the detection antibody



<b>Name:</b>		<b>Position:</b>	
<b>Signed:</b>		<b>Date:</b>	