

CERTIFICATE OF ANALYSIS

MONOCLONAL ANTIBODIES

D-Dimer Monoclonal Mouse Antibody

Code No.	BM243-3B6
Lot No.	

RECEIVER INFORMATION

Expiry Date	
Storage Temperature	Store below -60°C.
Shipping Notes	Avoid repeat freeze thaw cycles.
Shipping Temperature	Dry Ice

Note: if product is shipped frozen, but if delayed during shipment, may arrive at destination chilled but thawed. This is acceptable, but customers should consider that a single freeze thaw cycle has occurred and should plan to reduce the occurrence of further freeze thaw cycles.

PRODUCT INFORMATION

Reacts With	Human D-Dimer, including BBI Solution's code no. P202-3.
Immunogen	Human D-Dimer antigen.
BBI Solution's Clone No.	3B6
Application	Colloidal Gold Lateral flow, Latex agglutination, Red Blood Cell Agglutination, Western blot and ELISA. Recommended as a capture antibody in Sandwich ELISA assays with BM243-1D2 as the detection antibody. BM243-3B6 has been used as the detection antibody in Gold Conjugate lateral flow tests, conjugated to gold colloid particles on the reaction pad.
Specificity	Recognises D-Dimer, not monomer. Specific for clot derived XL-FDP's.
Cross Reactivity	The 3B6 antibody does not react with either fibrinogen or fibrinogen degradation products. (See WB photo)
Isotype	IgG _{3k}
Host	Mouse.
Purification	Ammonium sulphate precipitation
Presentation	Single homogenous batch, supplied liquid in a carbonate saline buffer, pH 9.2 containing 0.09% sodium azide.

Usage Notes

Please note that as this product is an IgG₃, it is inherently instable with a predisposition to precipitate out of solution upon thawing. Please be advised to thaw at 37°C followed by vortexing to allow for any precipitation to disperse. If the precipitate remains, the product may have to be centrifuged to remove the insoluble material and the concentration re-determined.

HEALTH AND SAFETY
Application

For in-vitro use and research or further processing only.

Precaution

Potentially hazardous.

Material Safety

For further information and technical details, please download a Safety Data Sheet at www.bbisolutions.com or contact your BBI Account Manager.

ANALYSIS

TESTS	SPECIFICATIONS	RESULTS
-------	----------------	---------

Determination Method:

Protein Concentration by
Optical Density at 280nm using
 $E_{0.1\%,1\text{cm}} = 1.60$

≥ 0.5 mg/ml

mg/ml

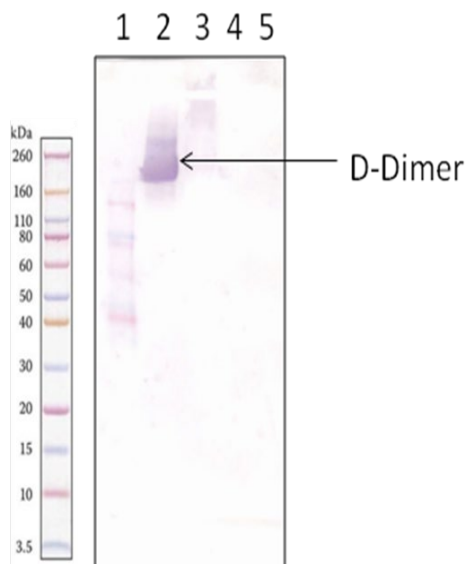
Western Blot Analysis

An example of the reactivity of BM243-3B6 with BBI Solution's antigen P202-3

Fig 1. Western blot analysis of D-Dimer and Fibrinogen reactivity with anti-D-Dimer (BM243-3B6)

Antibody dilution = 1:10,000

- (1) Novex sharp STD LC5800
- (2) Non reduced D-Dimer
- (3) Non reduced Human serum
- (4) Non-reduced Fibrinogen
- (5) Non-reduced Plasminogen.



Name:		Position:	
Signed:		Date:	