

# CERTIFICATE OF ANALYSIS

## MONOCLONAL ANTIBODIES

---

### CA19-9 Monoclonal Mouse Antibody

---

<b>Code No.</b>	<b>BM238-G6C8</b>
<b>Grade</b>	<b>Affinity Purified</b>
<b>Lot No.</b>	

---

#### RECEIVER INFORMATION

---

<b>Expiry Date</b>	
<b>Storage Temperature</b>	2-8°C (up to 1 month). Aliquot and store below -15°C (long term)
<b>Storage Notes</b>	Avoid repeat freeze thaw cycles
<b>Shipping Temperature</b>	2-8°C

---

#### PRODUCT INFORMATION

---

<b>Reacts with</b>	Human CA19-9 antigen, including BBI Solutions code no. P291-4
<b>Specificity</b>	Antibody detects endogenous levels of total CA19-9 antigen. May cross react with CA50 and CA242.
<b>Immunogen</b>	CA19-9 antigen from a human cell line.
<b>BBI Solutions Clone No.</b>	G6C8
<b>Application</b>	Can be used as a capture antibody for CA19-9 ELISA with BBI Solutions mAb BM238-H7D1 as the detection.
<b>Isotype</b>	IgG <sub>1</sub>
<b>Host</b>	Mouse
<b>Purification</b>	Protein G
<b>Presentation</b>	Single homogenous batch, 0.2µM filtered, supplied liquid in Phosphate Buffer Saline, pH 7.4 containing 0.09% sodium Azide.

---

#### HEALTH AND SAFETY

---

<b>Application</b>	For in-vitro use and research or further processing only.
<b>Precaution</b>	Potentially hazardous. For specific precautions, see Safety Data Sheet.
<b>Material Safety</b>	For further information and technical details, please download a Safety Data Sheet at <a href="http://www.bbisolutions.com">www.bbisolutions.com</a> or contact your BBI Account Manager.

**ANALYSIS**

TESTS	SPECIFICATIONS	RESULTS
-------	----------------	---------

**Determination Method:**

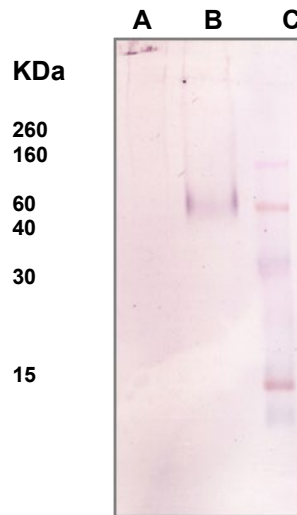
Protein Concentration by Optical Density at 280nm using $E_{0.1\%,1\text{cm}} = 1.35$	$\geq 0.5$ mg/ml	mg/ml
Indirect ELISA using antigen coated micro-plates	Report result	Pass/Fail
Purity	$\geq 90\%$ determined by CGE (Capillary Gel Electrophoresis)	

**Western Blot Analysis**      Reactivity with BBI Solutions P291-4 lot: 64-165

**Fig 1. Western blot analysis of human CA19-9 and reactivity with monoclonal mouse anti CA19-9 (lot 42-201)**

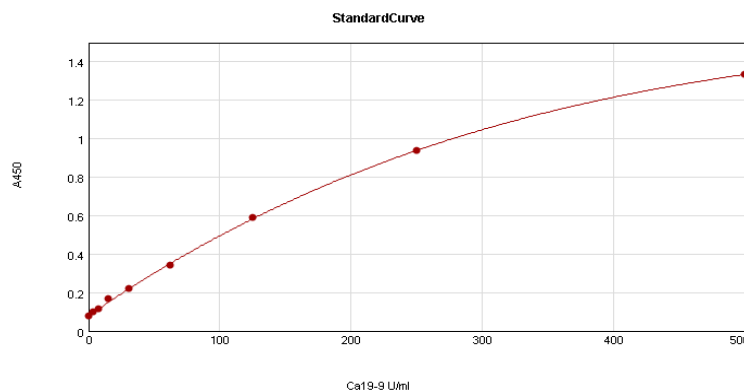
Antibody dilutions = 1:5,000

(A) Non-Reduced CA19-9  
 (B) Reduced CA19-9  
 (C) Novex sharp STD LC5800



**Sandwich ELISA**

BM238-G6C8 721-201 was tested as the capture antibody with BM238-H7D1 used as the detection antibody. BBI solutions P291-4 was used as the standard.



<b>Name:</b>		<b>Position:</b>	
<b>Signed:</b>		<b>Date:</b>	