

# WHY USE HUMAN CHIMERIC ANTIBODIES?



## Secure supply

Originating from cell culture, it's readily available and reproducible.



## Save time and money

Batch-to-batch comparability will save you lots of testing time.



## Ethically sourced

And no contamination risk, keeping your team safe.

## AND JUST AS EFFECTIVE AS DISEASE STATE PLASMA



### Immunodot analysis

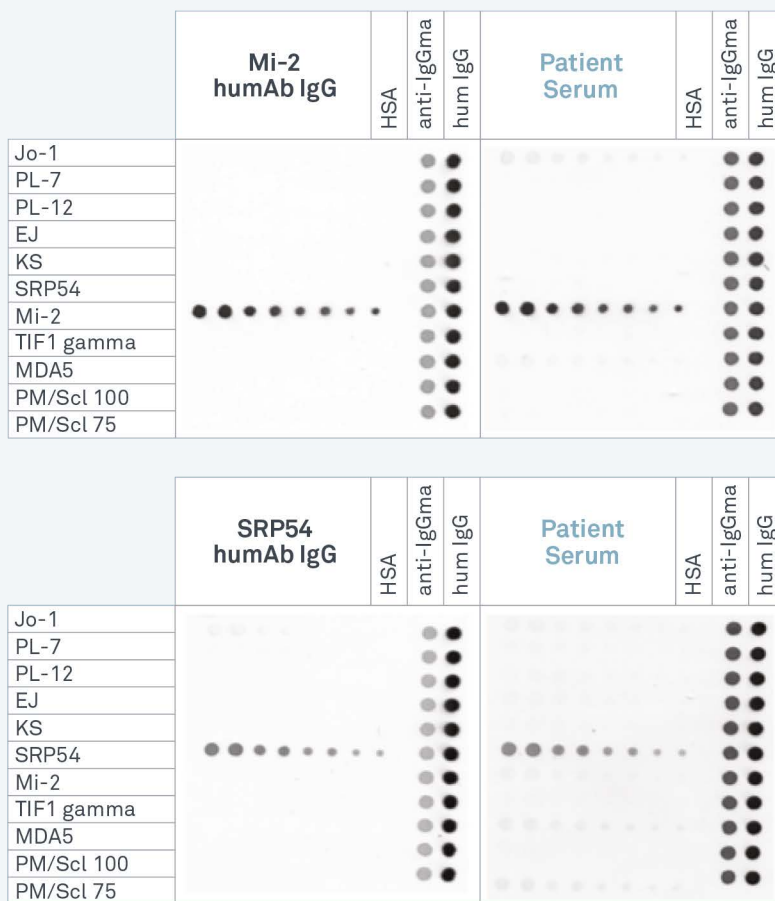


Figure: Immunodot analysis using anti-Mi-2 and anti-SRP54 human chimeric IgG antibodies and patient samples, showing the reactivity with DIALECT's recombinant myositis antigens Mi-2 and SRP54. Proteins and controls (HSA, anti-IgGMA and hum IgG) were printed on nitrocellulose membrane as indicated.