

CERTIFICATE OF ANALYSIS

MONOCLONAL ANTIBODIES

AMH mouse monoclonal antibody

Code No.	BM459-S4E8
Grade	Affinity Purified
Lot No.	

RECEIVER INFORMATION

Expiry Date	
Storage Temperature	2-8°C (up to 1 month). Aliquot and store below -15°C (long term)
Storage Notes	Avoid repeat freeze thaw cycles
Shipping Temperature	2-8°C

PRODUCT INFORMATION

Specificity	Antibody detects human Anti-Müllerian hormone (AMH)
Immunogen	Recombinant AMH
Source	Ascites
BBI Solutions Clone No.	S4E8
Application	Recommended for use in LF, CLIA and ELISA. Can be used as the Detection antibody in Sandwich ELISA with BBI Solutions BM459-P2B4 as the Capture antibody.
Isotype	IgG2 _b
Host	Mouse
Purification	Protein A
Presentation	Single homogenous batch, supplied liquid in a 0.01M PBS buffer, pH7.4 containing 0.02% sodium azide.

HEALTH AND SAFETY

Application	For in-vitro use and research or further processing only.
Precaution	Potentially hazardous. For specific precautions, see Safety Data Sheet.
Material Safety	For further information and technical details, please download a Safety Data Sheet at www.bbisolutions.com or contact your BBI Account Manager.

ANALYSIS

TESTS	SPECIFICATIONS	RESULTS
-------	----------------	---------

Determination Method

Protein concentration by Optical Density at 280nm.

≥0.5 mg/ml

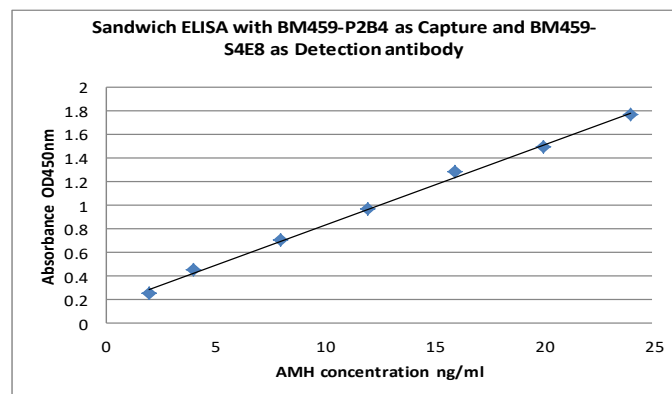
mg/ml

Purity

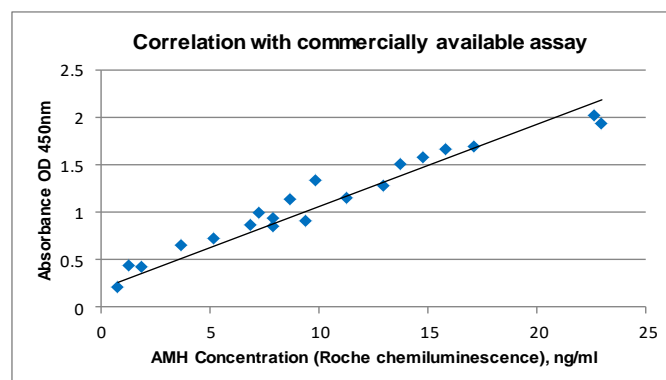
Defined by a major band ≥95% using SDS- PAGE.

Sandwich ELISA

An example of testing a previous Lot in sandwich ELISA using BM459-P2B4 as the Capture antibody and BM459-S4E8 as the Detection antibody.



An example of a sandwich ELISA using sera evaluated by Roche reagent with chemiluminescence using BM459-P2B4 as the Capture antibody and BM459-S4E8 as the Detection antibody.



Name:		Position:	
Signed:		Date:	