

# CERTIFICATE OF ANALYSIS

## MONOCLONAL ANTIBODIES

---

Glycated HbA1c Mouse Monoclonal Antibody (Anti-HbA1c mAb)

---

<b>Code No.</b>	<b>BM300-H2E2</b>
<b>Grade</b>	<b>Affinity purified</b>
<b>Lot No.</b>	

---

### RECEIVER INFORMATION

---

<b>Expiry Date</b>	
<b>Storage Temperature</b>	2-8°C (up to 1 month). Aliquot and store below -15°C (long term)
<b>Storage Notes</b>	Avoid repeat freeze thaw cycles
<b>Shipping Temperature</b>	2-8°C

---

### PRODUCT INFORMATION

---

<b>Reacts with</b>	Human HbA1c, including BBI Solutions code no. PS186-9
<b>Specificity</b>	HbA1c with no cross reactivity with HbA1o.
<b>Immunogen</b>	Purified synthetic glycated peptide.
<b>Source</b>	Mouse Hybridoma from Sp2/0 myeloma cell and lymphocytes in Balb/c mice.
<b>BBI Solutions Clone No.</b>	H2E2
<b>Application</b>	ELISA, Lateral flow, Latex Agglutination (Turbidimetric Assay). Use as the Detection antibody in HbA1c immunoassays. The antibody forms a matched pair with the Hb antibody BM302-S6B9.
<b>Isotype</b>	IgG <sub>1</sub>
<b>Host</b>	Mouse
<b>Purification</b>	Protein G
<b>Presentation</b>	Single homogenous batch, supplied liquid in a 10mM Phosphate Buffered Saline buffer, pH 7.4 with 0.1% Sodium Azide

---

### HEALTH AND SAFETY

---

<b>Application</b>	For in-vitro use and research or further processing only.
<b>Precaution</b>	The product has been labelled T (toxic) under UK regulations: COSHH Sch 1(6) for sodium azide concentration $\geq 0.1\%$ .
<b>Material Safety</b>	For further information and technical details, please download a Safety Data Sheet at <a href="http://www.bbisolutions.com">www.bbisolutions.com</a> or contact your BBI Account Manager.

**ANALYSIS**

TESTS	SPECIFICATIONS	RESULTS
-------	----------------	---------

**Determination Method:**

Protein Concentration by Optical Density at 280nm using  $E_{1\%,1\text{cm}} = 1.4$

>0.5 mg/ml

mg/ml

.79 mg/ml

4

SDS-Polyacrylamide Gel Electrophoresis.

To show one band corresponding to HbA1c IgG molecular weight > 95%.

Pass/Fail

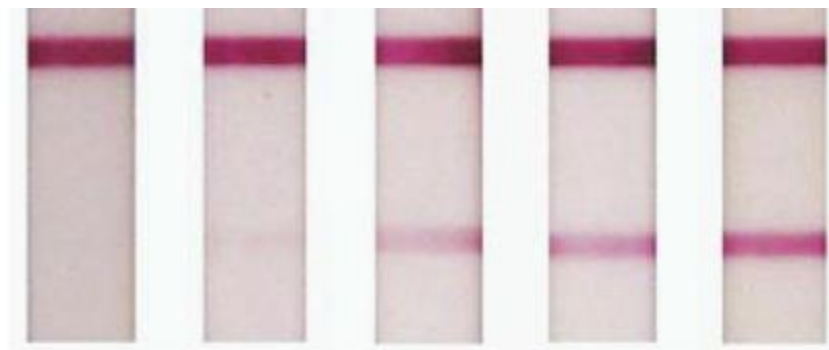
**Purity**

Defined as a major band on coomassie stained SDS- PAGE.

**Lateral Flow:**

Example data showing performance using previous lots of anti-HbA1c antibody BM300-H2E2 as the detection antibody and anti-Hb antibody BM302-S6B9 as the capture antibody. The percentage of HbA1c is shown shown.

% HbA1c: 5.2      6.5      7.9      9.7      12.1



<b>Name:</b>		<b>Position:</b>	
--------------	--	------------------	--

Signed:

Date: