

# CERTIFICATE OF ANALYSIS

## MONOCLONAL ANTIBODIES

---

### NS1 Dengue Virus, Mouse Monoclonal Antibody

---

<b>Code no.</b>	<b>BM339-T3H2</b>
<b>Grade</b>	<b>Affinity Purified</b>
<b>Lot no.</b>	

---

#### RECEIVER INFORMATION

<b>Expiry Date</b>	
<b>Storage Temperature</b>	2-8°C (up to 1 month). Aliquot and store below -15°C (long term)
<b>Storage Notes</b>	Avoid repeat freeze thaw cycles
<b>Shipping Temperature</b>	2-8°C

---

#### PRODUCT INFORMATION

<b>Specificity</b>	Antibody specifically detects NS1, human Dengue virus subtype 2.
<b>Immunogen</b>	Purified from Native Dengue virus, NS1.
<b>Source</b>	Ascities of balb/c mouse.
<b>BBI Solutions clone no.</b>	T3H2
<b>Application</b>	Lateral Flow. Other applications not tested. In Lateral Flow, recommended as the capture antibody with BM339-P3D8 or BM339-P6C6 as the detection antibody.
<b>Isotype</b>	IgG
<b>Host</b>	Mouse
<b>Purification</b>	Protein G
<b>Presentation</b>	Single homogenous batch, supplied liquid in a PBS buffer, pH7.2 containing 0.1% sodium azide.
<b>Purity</b>	≥ 90%.

---

#### HEALTH AND SAFETY

<b>Application</b>	For in-vitro use and research or further processing only.
<b>Precaution</b>	The product has been labelled T (toxic) under UK regulations: COSHH Sch 1(6) for sodium azide concentration ≥ 0.1%.
<b>Material Safety</b>	For further information and technical details, please download a Safety Data Sheet at <a href="http://www.bbisolutions.com">www.bbisolutions.com</a> or contact your BBI Account Manager.

**ANALYSIS**

TESTS	SPECIFICATIONS	RESULTS
-------	----------------	---------

**Determination method:**

Protein Concentration by Optical Density at 280nm using $E_{1\%,1\text{cm}} = 1.38$	>0.5 mg/ml	mg/ml
---	------------	-------

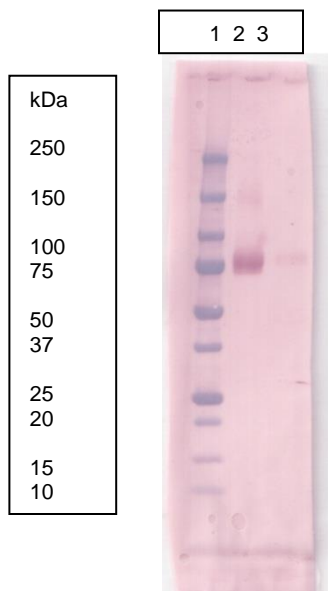
**Purity** Defined by a major band  $\geq 90\%$  on coomassie stained SDS-PAGE.

**ADDITIONAL INFORMATION**

**An example of performance in Western Blot**

BM339-T3H2 was used as the primary antibody in a western blot against Dengue NS1 antigen, both reduced and non-reduced.

Figure 1 Western Blot analysis of Dengue NS1 Serotype 2 Antigen with monoclonal mouse anti NS1 Serotype 2 (lot 339-201)  
 Antibody Dilution = 1:5000  
 Lane 1 Standard  
 Lane 2 Dengue NS1 Serotype 2@ 100µg/ml Non-Reduced  
 Lane 3 Dengue NS1 Serotype 2@ 100µg/ml Reduced



<b>Name:</b>		<b>Position:</b>	
<b>Signed:</b>		<b>Date:</b>	